



Value this half term : Thankfulness

5th September 2025

Head teacher's message.

It hasn't been quite the start to the school year that we had hoped for, but it has been truly wonderful to have the children back in school this week. The energy, smiles, and excitement they bring to the classrooms and playground remind us of why this is such a special community to be part of. A particular mention must go to our new starters, who have already made a brilliant impression. We are so proud of how quickly they have settled in and how confidently they are beginning their school journey. At lunchtimes, our younger children have been wonderfully supported by their capable Year 6 buddies, who are helping them find their feet with kindness and care. One Reception child even asked us for a napkin at lunch this week, which certainly brightened our day! We know this first half term is a long one and that the return to routines can be tiring for everyone, but we are confident that it will be filled with growth, learning, and many more moments to make us smile.

DIARY DATES

5 th -10 th September	Spirituality Week
7 th September	St. Anne's All Age Worship
10 th September	Y6 Tower Wood parents' meeting 6pm
11 th September	Year 4 start swimming
15 th September	Messy Church
17 th September	Parents phonics meeting
24 th September	Pre-School & Reception settling-in meetings and meet the teacher for all year groups
1 st – 3 rd October	Year 6 to Tower Wood
1 st October	Reception vision checks
5 th October	St. Anne's All Age Worship
10 th October	Church quiz night, 7pm
16 th October	Year 5 River Wyre visit
16 th October	Year 6 church class worship
24 th October	INSET day

NEW FAMILIES

Welcome to all our new families in Reception. We also say a warm welcome to many other additional families who have joined us in different classes across school this week. A huge St. Anne's welcome.

MRS MEIKLE

Miss Hardy is now officially Mrs Meikle after her wedding this summer. A massive congratulations to her and her husband. May they be blessed with many happy years together.

CHURCH QUIZ AT CRICKET CLUB

Adults are welcome to join the quiz night on Friday 10th October at 7pm. Please see the poster at the end of the newsletter.

YEAR 5 HIGH SCHOOL TRANSPORT INFORMATION

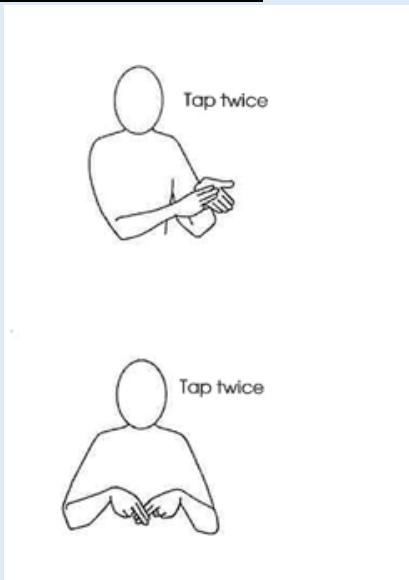
Lancashire County Council have asked schools across Lancashire to forward information regarding transport when considering their child's high school in Year 5. Please see the poster at the end of the newsletter.

THANK YOU

Thank you to all our families for your patience and understanding following the unforeseen closure of school on Tuesday. We appreciate just how much disruption and disappointment this situation would have caused.



MAKATON SIGNS ON THE WEEK



Top sign : Mum / Mummy /Mother

Bottom sign : Dad / Daddy / Father

All classes will continue to adopt Makaton which is a great tool to learn in school because it supports communication, inclusion, and understanding for all children — not just those with additional needs.

Benefits of Makaton include :

- Helps children with speech, language, or learning difficulties express themselves.
- Reduces frustration and behaviour challenges caused by communication barriers.
- Makes the school environment more inclusive for children who use Makaton regularly.
- Helps peers communicate with and understand classmates who might otherwise be isolated.

SCHOOL LUNCHES

Last year, some of our pupils suggested changes to lunchtime so they could choose whether to eat indoors or outdoors during fairer weather. We have listened carefully to their ideas and are excited to trial a new system that we hope will make lunchtimes more enjoyable, especially for children in Years 3 to 6.

From this week, KS2 children will no longer eat in their classrooms and we have implemented a new system where all the children have been able to eat in the hall. Next week (weather permitting) we will trial Y5 eating either inside or outside whether they are having a school dinner or a packed lunch. This means pupils who have school lunches can now enjoy eating together with friends, making lunchtime a more social part of the day.

We have already spoken to the children about these changes, and we hope this trial demonstrates how much we value their voices and the ideas they contribute to our school community.

PARKING ACTION REMINDERS:

If you spot any inconsiderate parking on the zig zags or the double yellow lines around the school, you can report this to [Report a parking problem to LCC](#).

If there is inconsiderate parking on the pavements at the rear of the school, you can report this on [Report a parking problem to the Police](#).

DISABLED PARKING

We are trialling an additional disabled parking bay on the church car park. The temporary bay will be directly next to the 2 designated bays. Please help our families with access issues to park in close proximity to school by leaving this bay free. An 'A board' will mark the bay. Thank you for your cooperation.

TOWER WOOD PARENTS' MEETING

Year 6 parents and warmly invited to the Tower Wood meeting on Wednesday 10th September, 6pm.

NUTRITION

At school, we know that what children eat can make a real difference to how they feel and how well they learn. A balanced diet helps to give them the energy and focus they need for a busy day of lessons, play, and fun with friends. New national guidance on school food and nutrition reminds us how important it is to provide children with snacks that not only fill them up but also give them the goodness their growing bodies and minds need. Simple swaps, such as fruit, vegetable sticks, yoghurt, or wholegrain crackers, can keep children fuelled for learning much better than sugary or highly processed alternatives.

We'd like to encourage families to think about the snacks coming into school and to choose options that help children stay healthy and energised throughout the day. This is not about banning certain foods or making anyone feel judged – we all know that every family does its best. Instead, it's about working together to give our children the best start possible.

Thank you for your support in helping us promote healthy choices – small steps really do make a big difference!

SCHOOL UNIFORM

The children looked very smart in their uniforms this week. We are very proud of our St. Anne's Copp identify and it is lovely seeing the children taking pride in their appearance. Please remember that shoes should be plain black and as per our uniform policy, jewellery such as earrings should be a plain earring stud only.

RECEPTION 2026 ADMISSIONS

Applications for Reception places September 2026 are now open. Prospective parents should read the poster at the end of the newsletter.

**Have a lovely weekend.
From all the team at St. Anne's Copp**

ENRICHMENT CLUBS

Enrichment clubs will begin week commencing 15.09.25 – please keep your eye on Class Dojo for more information.

MEET THE TEACHER

24th September, advance notice of an informal opportunity for you to meet your child's class teacher. This will not be a progress check but a chance to see how they have settled into the new school year and a new year group.

Dear Parents/Kinship Carers of Current Year 5 pupils

This letter is regarding prospective secondary school application, and how important it is to consider home to transport prior to making your final decision.

You must consider carefully how your child will get to and from your preferred secondary schools before submitting your application for a school place.

Pupils will only be eligible for free travel if they have an entitlement under the County Council's [Home to School Transport Policy](#). It is important, when selecting your preferences for a school place, that you have read and understood the information available on the [website](#) regarding [school admissions](#) and [travel assistance](#).

It is essential to remember - for transport purposes - the 'nearest suitable school' is the nearest school to the family home – and - in some cases, the nearest school will be located within another local authority area.

If you choose to send your child to a school that Lancashire County Council does not consider to be the nearest suitable school, there is no duty to provide free transport. You will need to make your own transport arrangements.

Assistance with home to school travel will not be needed for most children as they will attend their local school which will be within a reasonable walking distance when accompanied by a parent/carer as necessary.

However, if transport costs are a concern to you, please contact your Area Education Office before submitting your application:

NORTH AREA	SOUTH AREA	EAST AREA
Lancaster, Morecambe, Wyre and Fylde	Preston, South Ribble, West Lancashire and Chorley	Hyndburn, Ribble Valley, Burnley, Pendle and Rossendale
(01524) 581148	(01772) 532109	(01254) 220747

If your child is not eligible for free travel assistance but you would like your child to travel to school by bus, you may be able to buy a season travel pass from us.

The County Council will not provide extra services for non-statutory pupils and you will need to [plan how your child will get to school](#) if space on the bus is not available.

Please call 0300-123-6738 or visit [School bus season tickets - Lancashire County Council](#) to make an application.

It is important to plan ahead. Please make sure that appropriate transport is available, should a place be allocated at your preferred school.



Test your
taste
buds

St Anne's Copp QUIZ NIGHT



Trivia
Test



Why?
Where?
When?



Who is
that?



7 pm 10th October 2025
Great Ecclestone Cricket Club

Light refreshments
Cricket Club Bar open to purchase drinks

Tickets £10 per contestant (Table Teams of 4)

Tickets from St Annes Copp OR email:
fundraising @stannecopp.co.uk

SCHOOL

ADMISSIONS PRIMARY



APPLY NOW!

at lancashire.gov.uk/schools

School and Academy places September 2026

You must apply if your child has a 4th birthday between 1 September 2025 and 31 August 2026.

You must apply even if an older brother or sister is already at the school, or the school is linked to your child's nursery.

If you're a non-Lancashire resident apply through your own local authority. Please read the admission criteria for your chosen schools on the website or get a copy from them.


CLOSING DATE

15 January 2026



lancashire.gov.uk

School transport

If travel cost is an important factor in school preference, search 'school transport' 

Lancashire
County 

"Let us love, not in word, but in truth and action." 1 John 3:18