



Value this half term : Thankfulness

11th September 2025

Head teacher's message.

It will be our first Stars of the week assembly tomorrow morning. Those children who will receive an award will have received an email from school to invite you to this. We also welcome parents joining via Zoom as usual. Our Reception children are not yet ready to join us for this, but we are hopeful in the next week or two we will have all classes taking part in this.

Our Year 6 pupils have been wonderfully supporting our newest pupils since they began 'big school'. It has been a pleasure watching the children support and interact with one another. We appreciate just how big a step this is for Reception children, but they have coped very well in their first weeks.

DIARY DATES

15 th September	Y2 Walk to Elswick Park
15 th September	Messy Church
17 th September	Parents phonics meeting
18 th September	Y3 Forest School
18 th September	Y4 swimming
24 th September	Settling-in parents Meeting/Meet the teacher
24 th September	Reception & Y6 height /weight
25 th September	Y3 Forest School
25 th September	Y4 swimming
30 th September	Individual and class photos
1 st – 3 rd October	Year 6 to Tower Wood
1 st October	Reception vision checks
2 nd October	Y3 Forest School
2 nd October	Y4 swimming
5 th October	St. Anne's All Age Worship. HARVEST.
9 th October	Y3 Forest School
9 th October	Y4 swimming
10 th October	Church quiz night, 7pm
13 th October	Messy Church
16 th October	Year 5 River Wyre visit
16 th October	Year 6 church class Worship
16 th October	Y3 Forest School
16 th October	Y4 swimming
20 th October	Double Page Spread winners announced
22 nd October	Values Assembly
23 rd October	Y3 Forest School
23 rd October	Y4 swimming
23 rd October	School closes 3.15pm
24 th October	INSET day

CHURCH QUIZ AT CRICKET CLUB

Adults are welcome to join the quiz night on Friday 10th October at 7pm. Please see the poster at the end of the newsletter.

YEAR 5 HIGH SCHOOL TRANSPORT INFORMATION

Lancashire County Council have asked schools across Lancashire to forward information regarding transport when considering their child's high school in Year 5. Please see the poster at the end of the newsletter.

MOBILE PHONE SAFETY

Please see 4 documents at the end of the newsletter to help empower families to keep children and families safe when using mobile phones.

SETTLING-IN MEETING / MEET THE TEACHER

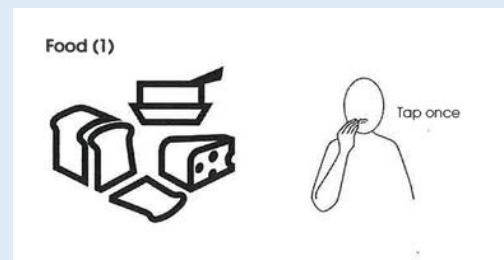
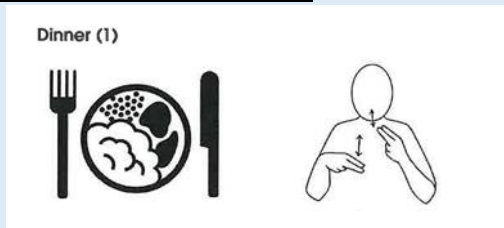
We welcome our families into school on Wednesday 24th September for an informal meet the teacher drop-in evening. This is a great chance to meet your child's teacher and staff as well as discuss how they have settled back into school life after the holidays. Please note – this is not a progress check as it is too early in the year. We look forward to seeing you 3.30 – 5.30pm.

ENRICHMENT CLUBS

Please find attached a list of enrichment clubs for Autumn 1 term.



MAKATON SIGNS ON THE WEEK



All classes will continue to adopt Makaton which is a great tool to learn in school because it supports communication, inclusion, and understanding for all children — not just those with additional needs. Benefits of Makaton include :

- Helps children with speech, language, or learning difficulties express themselves.
- Reduces frustration and behaviour challenges caused by communication barriers.
- Makes the school environment more inclusive for children who use Makaton regularly.
- Helps peers communicate with and understand classmates who might otherwise be isolated.

SCHOOL LUNCHES

We have pressed ahead with the new lunchtime arrangements for our upper year groups. Children have chosen to either eat their lunch outside or inside whether they are on a school dinner or packed lunch. This has gone down very well and has allowed our children to have valuable social time with their friends.

RECEPTION 2026 ADMISSIONS

Applications for Reception places September 2026 are now open. Prospective parents should read the poster at the end of the newsletter.

SCHOOL UNIFORM

The children looked very smart in their uniforms this week. We are very proud of our St. Anne's Copp identify and it is lovely seeing the children taking pride in their appearance. Please remember that shoes should be plain black and as per our uniform policy, jewellery such as earrings should be a plain earring stud only.

PARKING ACTION REMINDERS :

If you spot any inconsiderate parking on the zig zags or the double yellow lines around the school, you can report this to [Report a parking problem to LCC.](#)

If there is inconsiderate parking on the pavements at the rear of the school, you can report this on [Report a parking problem to the Police.](#)

DISABLED PARKING

We are trialling an additional disabled parking bay on the church car park. The temporary bay will be directly next to the 2 designated bays. Please help our families with access issues to park in close proximity to school by leaving this bay free. An 'A board' will mark the bay. Thank you for your cooperation.

TOWER WOOD PARENTS' MEETING

Thank you to all the parents and carers who attended the Tower Wood parents' meeting on Wednesday evening.

NUTRITION

At school, we know that what children eat can make a real difference to how they feel and how well they learn. A balanced diet helps to give them the energy and focus they need for a busy day of lessons, play, and fun with friends. New national guidance on school food and nutrition reminds us how important it is to provide children with snacks that not only fill them up but also give them the goodness their growing bodies and minds need. Simple swaps, such as fruit, vegetable sticks, yoghurt, or wholegrain crackers, can keep children fuelled for learning much better than sugary or highly processed alternatives.

We'd like to encourage families to think about the snacks coming into school and to choose options that help children stay healthy and energised throughout the day. This is not about banning certain foods or making anyone feel judged – we all know that every family does its best. Instead, it's about working together to give our children the best start possible.

Thank you for your support in helping us promote healthy choices – small steps really do make a big difference!

**Have a lovely weekend.
From all the team at St. Anne's Copp**

Dear Parents/Kinship Carers of **Current Year 5 pupils**

This letter is regarding prospective secondary school application, and how important it is to consider home to transport prior to making your final decision.

You must consider carefully how your child will get to and from your preferred secondary schools before submitting your application for a school place.

Pupils will only be eligible for free travel if they have an entitlement under the County Council's [Home to School Transport Policy](#). It is important, when selecting your preferences for a school place, that you have read and understood the information available on the [website](#) regarding [school admissions](#) and [travel assistance](#).

It is essential to remember - for transport purposes - the 'nearest suitable school' is the nearest school to the family home – and - in some cases, the nearest school will be located within another local authority area.

If you choose to send your child to a school that Lancashire County Council does not consider to be the nearest suitable school, there is no duty to provide free transport. You will need to make your own transport arrangements.

Assistance with home to school travel will not be needed for most children as they will attend their local school which will be within a reasonable walking distance when accompanied by a parent/carer as necessary.

However, if transport costs are a concern to you, please contact your Area Education Office before submitting your application:

NORTH AREA	SOUTH AREA	EAST AREA
Lancaster, Morecambe, Wyre and Fylde	Preston, South Ribble, West Lancashire and Chorley	Hyndburn, Ribble Valley, Burnley, Pendle and Rossendale
(01524) 581148	(01772) 532109	(01254) 220747

If your child is not eligible for free travel assistance but you would like your child to travel to school by bus, you may be able to buy a season travel pass from us.

The County Council will not provide extra services for non-statutory pupils and you will need to [plan how your child will get to school](#) if space on the bus is not available.

Please call 0300-123-6738 or visit [School bus season tickets - Lancashire County Council](#) to make an application.

It is important to plan ahead. Please make sure that appropriate transport is available, should a place be allocated at your preferred school.



Test your
taste
buds

St Anne's Copp QUIZ NIGHT



Trivia
Test



Why?
Where?
When?



Who is
that?



7 pm 10th October 2025
Great Ecclestone Cricket Club

Light refreshments
Cricket Club Bar open to purchase drinks

Tickets £10 per contestant (Table Teams of 4)

Tickets from St Annes Copp OR email:
fundraising @stannecopp.co.uk

SCHOOL ADMISSIONS PRIMARY



APPLY NOW!

at lancashire.gov.uk/schools

School and Academy places September 2026

You must apply if your child has a 4th birthday between 1 September 2025 and 31 August 2026.

You must apply even if an older brother or sister is already at the school, or the school is linked to your child's nursery.

If you're a non-Lancashire resident apply through your own local authority. Please read the admission criteria for your chosen schools on the website or get a copy from them.

CLOSING DATE

15 January 2026



lancashire.gov.uk

School transport

If travel cost is an important factor in school preference, search 'school transport'



Lancashire
County 

"Let us love, not in word, but in truth and action." 1 John 3:18

Parenting Guide: Using Life360 to Secure Your Child's Phone

1. What is Life360?

Life360 is a family safety app that helps parents stay connected with their children by providing real-time location tracking, driving behavior reports, and emergency alerts. It allows families to create private 'Circles' where members can share their locations and communicate securely.

2. How to Set Up Life360

1. Download the Life360 app from the App Store or Google Play.
2. Create an account using your email or phone number.
3. Set up your profile and create a Circle for your family.
4. Invite your child to join the Circle by sharing the invite code.
5. Grant necessary permissions such as location access and notifications.

3. Key Features for Safety

a. Location Tracking

Track your child's real-time location and receive alerts when they arrive or leave designated places like school or home.

b. Driving Reports

Monitor driving behavior including speed, phone usage while driving, and hard braking to ensure safe travel.

c. SOS Alerts

Your child can send an SOS alert with their location to all Circle members in case of emergency.

4. Tips for Using Life360 Effectively in the UK

- Discuss the app openly with your child to build trust and understanding.
- Use location alerts to monitor school commutes and social outings.
- Set up geofences around key locations for automatic notifications.
- Review driving reports together to encourage safe habits.
- Use the app's privacy settings to manage what information is shared.

Parent Guide to Mobile Safety in the UK

Introduction

Mobile phones are a big part of children's lives. While they offer many benefits, they also come with risks. This guide helps parents in the UK keep their children's mobile use safe and healthy.

General Mobile Safety Tips

- Talk regularly with your child about how they use their phone.
- Set clear rules about screen time and appropriate content.
- Keep devices in shared family spaces when possible.
- Encourage your child to come to you if something online makes them uncomfortable.

Recommended Parental Control Apps

Here are some trusted apps that help parents monitor and manage mobile use:

- Qustodio: Offers screen time limits, app blocking, and activity reports.
- Net Nanny: Provides web filtering, alerts, and location tracking.
- Norton Family: Helps monitor web use, search terms, and time spent online.

Social Media Safety

- Know which platforms your child uses (e.g., TikTok, Instagram, Snapchat).
- Set privacy settings to limit who can contact or view your child's profile.
- Teach your child not to share personal information or location publicly.
- Encourage respectful and kind behavior online.

Screen Time Management

- Use built-in tools like Apple Screen Time or Google Family Link.
- Set daily limits and schedule device-free times (e.g., during meals or bedtime).
- Model healthy screen habits as a parent.

UK-Specific Resources

- NSPCC: <https://www.nspcc.org.uk/keeping-children-safe/online-safety/>
- Internet Matters: <https://www.internetmatters.org/>
- Childnet: <https://www.childnet.com/>
- UK Safer Internet Centre: <https://saferinternet.org.uk/>

Comparison of Parental Control Apps

This table compares popular parental control apps that help monitor and manage children's phone usage. It includes key features, supported platforms, and pricing information where available.

App Name	Key Features	Platforms Supported	Pricing (if available)
Qustodio	Screen time tracking, app usage, web filtering, location tracking, panic button	iOS, Android, Windows, Mac	Free basic plan; Premium starts at ~£39.95/year
Net Nanny	Internet filter, app blocking, screen time management, location tracking	iOS, Android, Kindle, Windows	Starts at ~£39.99/year
Norton Family	Web activity monitoring, search tracking, location tracking, time limits	Windows, Android, iOS	Included with Norton 360 Premium (~£79.99/year)
Google Family Link	App management, screen time limits, location tracking, approve downloads	Android, iOS	Free
Life360	Real-time location tracking, driving reports, SOS alerts, check-ins	iOS, Android	Free basic plan; Premium plans available
Bark	Monitors texts, emails, 30+ apps for risks, alerts to parents	iOS, Android, Chromebooks	Starts at ~£79/year
Apple Screen Time & Family Sharing	App limits, downtime, content restrictions, purchase approvals, location tracking	iOS only	Free (built-in)

Parent Guide to Apple Family Sharing and iPhone Safety

1. Setting Up Family Sharing

Apple Family Sharing allows you to share Apple subscriptions, purchases, and more with up to six family members. To set it up:

- Go to Settings > [your name] > Family Sharing.
- Tap 'Set Up Your Family' and follow the onscreen instructions.
- Invite family members using their Apple IDs.

2. Managing Screen Time

Screen Time helps you monitor and limit your child's device usage:

- Go to Settings > Screen Time.
- Tap 'Turn On Screen Time' and choose 'This is My Child's iPhone'.
- Set Downtime, App Limits, and Content & Privacy Restrictions.

3. Using Ask to Buy

Ask to Buy sends purchase requests to the family organizer:

- Go to Settings > [your name] > Family Sharing > [child's name] > Ask to Buy.
- Turn on Ask to Buy to approve or decline purchases remotely.

4. Sharing Locations

Location sharing helps you keep track of your child's whereabouts:

- Open Find My app.
- Tap 'Share My Location' and choose family members.
- Ensure Location Services are enabled in Settings > Privacy & Security > Location Services.

5. Setting Content Restrictions

You can restrict explicit content, web access, and app downloads:

- Go to Settings > Screen Time > Content & Privacy Restrictions.
- Enable restrictions and customize settings for content, web access, and app usage.

6. Tips for Keeping Children Safe on Apple Devices

- Regularly review your child's device usage and app activity.
- Use Family Sharing to manage purchases and subscriptions.

	Autumn 1 Clubs	Open to	Dates	Time	Price	Payable to	Location	How to get a place?	Places
Monday	Messy Church	Reception to Y6	15.09.25 & 13.10.25	3.15pm-4.30pm	£2 per session	School	Church	Book via ParentPay	Yes
	Ju-Jitsu	Reception to Y6	08.09.25 – 20.10.25	3.15pm-4.15pm	£36	Activ8	Hall	Email: info@activ8selfdefence.com.	Yes
Tuesday	Acrobatic and tumbling club	Y3-Y6	16.09.25-21.10.25	3.15pm-4.15pm	£6 per session	Collaboration dance	Hall	Email: collaborationdancearts@gmail.com	Yes
Wednesday	Art & Craft Club	Reception to Y6	17.09.25 – 22.10.25	3.15pm-4.15pm	£30	School	Y3	Book via ParentPay	Yes
Thursday	Golfstarz	Y1-Y6	18.09.25 – 23.10.25	3.15pm-4.15pm	£30	Golfstarz	Playground	Email blackpoolgolfstarz@gmail.com	Yes
Friday	Cook Stars	Reception to Y6	19.09.25 – 17.10.25	3.15pm-4.30pm	£57.50	Cook stars	Hall	https://portal.cookstars.franscape.io/class-overview/2420	Yes

“Let us love, not in word, but in truth and action.” 1 John 3:18