



Value this half term : Thankfulness

18th September 2025

Head teacher's message.

It has been such a joy to see our enrichment clubs spring back into action this week! As a school, we are incredibly proud to provide children with opportunities that broaden their horizons and allow them to try experiences they may never have considered before. A wonderful example of this is our new acrobatic and tumbling club, led by Miss Dickinson in partnership with Collaboration Dance Arts. On Tuesday, the staff and I were truly amazed as we watched an enthusiastic group of children embrace the challenge of physical acrobatics. Their resilience, confidence, and sheer willingness to 'have a go' were nothing short of inspiring. A huge well done to everyone involved—we cannot wait to see what you achieve next!

DIARY DATES

18 th September	Y3 Forest School
18 th September	Y4 swimming
24 th September	Settling-in parents Meeting/Meet the teacher
24 th September	Reception & Y6 height /weight
25 th September	Y3 Forest School
25 th September	Y4 swimming
30 th September	Individual and class photos
1 st – 3 rd October	Year 6 to Tower Wood
1 st October	Reception vision checks
2 nd October	Y3 Forest School
2 nd October	Y4 swimming
5 th October	St. Anne's All Age Worship. HARVEST.
9 th October	Y3 Forest School
9 th October	Y4 swimming
10 th October	Church quiz night, 7pm
13 th October	Messy Church
16 th October	Year 5 River Wyre visit
16 th October	Year 6 church class Worship
16 th October	Y3 Forest School
16 th October	Y4 swimming
20 th October	Double Page Spread winners announced
20 th October	PINS Parents' session 9.30am
23 rd October	Values Assembly
23 rd October	Y3 Forest School
23 rd October	Y4 swimming
23 rd October	School closes 3.15pm

STARS OF THE WEEK :



YEAR 1 : **Jayden**
YEAR 3 : **Henry**
YEAR 5 : **Ollie D**



YEAR 2 : **Grace E**
YEAR 4 : **Eva**
YEAR 6 : **Rory, Vinny**

MY HAPPY MIND WINNERS :

YEAR 1 **Willow** showing love and kindness
YEAR 2 : **Oliver B** attitude of gratitude
YEAR 3 : **Thomas** positive mind set
YEAR 4 : **William** positive mind set
YEAR 5 : **Willow** positive attitude
YEAR 6 : **Nicole** support to her buddy

HEAD TEACHER'S AWARDS :

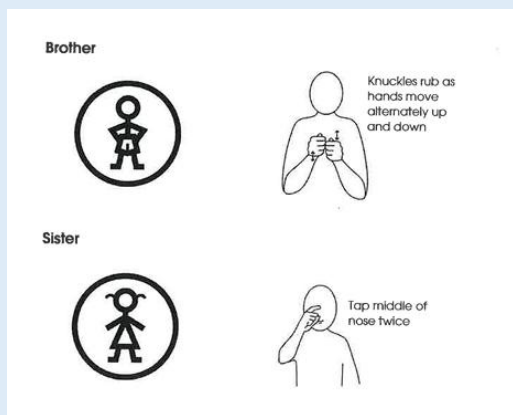
Leo (Y1), Noah M (Y2),
Beau (Y3)

WELL DONE YELLOW TEAM!

First point this year!



MAKATON SIGNS ON THE WEEK



All classes continue to adopt Makaton which is a great tool to support communication, inclusion, and understanding for all children — not just those with additional needs.

RECEPTION 2026 ADMISSIONS

Applications for Reception places September 2026 are now open. Prospective parents should read the poster at the end of the newsletter.

ENRICHMENT CLUBS

Please find attached a list of enrichment clubs for Autumn 1 term.

GECCOES

We are delighted that so many families are making use of our after-school club this term, and we have received an unprecedented number of bookings since our return. To ensure we maintain the highest standards of care and safety for all children, there may be occasions when we are unable to accept last-minute bookings if our capacity has already been reached. We truly appreciate your understanding and are doing our very best to let families know in advance of any evenings when we are unable to take further bookings.

CHURCH QUIZ AT CRICKET CLUB

Adults are welcome to join the quiz night on Friday 10th October at 7pm. Please see the poster at the end of the newsletter.

MOBILE PHONE SAFETY

Please see 4 documents at the end of the newsletter to help empower families to keep children and families safe when using mobile phones.

PARKING ACTION REMINDERS :

If you spot any inconsiderate parking on the zig zags or the double yellow lines around the school, you can report this to [Report a parking problem to LCC](#).

If there is inconsiderate parking on the pavements at the rear of the school, you can report this on [Report a parking problem to the Police](#).

DISABLED PARKING

We are trialling an additional disabled parking bay on the church car park. The temporary bay will be directly next to the 2 designated bays. Please help our families with access issues to park in close proximity to school by leaving this bay free. An 'A board' will mark the bay. Thank you for your cooperation.

PINS PROJECT

We are one of 15 schools across Lancashire that is taking part in the PINS project. Involvement in this project will help school work strategically, and also strengthen the relationship between us and our parent carers of neurodivergent children. To enable school to gather robust feedback, please can we kindly ask for parental feedback using the following link : <https://forms.cloud.microsoft/Pages/ResponsePage.aspx?id=1IfyqoXOPUmpgHyWbSayWigatqN1ZMxNmcTqaFFXxidUOENQVjZOMzVaSTJLMDNKQzhYMKExSEsyQy4u>

PHONICS PARENTS' MEETING

Thank you to all the parents and carers who attended the Phonics parents' meeting last night. We hope you found it useful.

SETTLING-IN MEETING / MEET THE TEACHER

We welcome our families into school on Wednesday 24th September for an informal meet the teacher drop-in evening. This is a great chance to meet your child's teacher and staff as well as discuss how they have settled back into school life after the holidays. Please note – this is not a progress check as it is too early in the year. We look forward to seeing you 3.30 – 5.30pm. Miss Whittle will be available until 5pm for any parents wishing to discuss additional needs.

VOLUNTARY CONTRIBUTIONS

The school is inviting families to make a voluntary contribution to support some of our internal clubs. Any funds raised in this way will be donated to our link school in Uganda, helping us strengthen this important partnership.

We'd like to clarify that the contribution linked to Messy Church is a school initiative, not a request from the church. For families who booked onto this week's Messy Church session, please note that your accounts will be refunded, as the session was unfortunately cancelled. We are looking to rectify this as soon as we have sorted out the issue with ParentPay.

FOOD BANK

School has a food bank donation point in Reception for families to donate dried goods or toiletries to our local foodbank. A representative from church usually collects this once a month and takes the donations to a collection point in Preston. If you are able to add to our donations, this would be very welcome.

POOLFOOT FARM FOOTBALL TOURNAMENT

Good luck to our football team who will be playing their first competitive game for school tonight. Play well, show good sportsmanship and be fantastic!

**Have a lovely weekend.
From all the team at St. Anne's Copp**

Test your
taste
buds

St Anne's Copp QUIZ NIGHT

Trivia
Test

Why?
Where?
When?

Who is
that?



7 pm 10th October 2025
Great Ecclestone Cricket Club

Light refreshments
Cricket Club Bar open to purchase drinks

Tickets £10 per contestant (Table Teams of 4)

Tickets from St Annes Copp OR email:
fundraising @stannecopp.co.uk

SCHOOL

ADMISSIONS PRIMARY



APPLY NOW!

at lancashire.gov.uk/schools

School and Academy places September 2026

You must apply if your child has a 4th birthday between 1 September 2025 and 31 August 2026.

You must apply even if an older brother or sister is already at the school, or the school is linked to your child's nursery.

If you're a non-Lancashire resident apply through your own local authority. Please read the admission criteria for your chosen schools on the website or get a copy from them.


CLOSING DATE

15 January 2026



lancashire.gov.uk

School transport

If travel cost is an important factor in  school preference, search 'school transport'

Lancashire
County 

"Let us love, not in word, but in truth and action." 1 John 3:18

Parenting Guide: Using Life360 to Secure Your Child's Phone

1. What is Life360?

Life360 is a family safety app that helps parents stay connected with their children by providing real-time location tracking, driving behavior reports, and emergency alerts. It allows families to create private 'Circles' where members can share their locations and communicate securely.

2. How to Set Up Life360

1. Download the Life360 app from the App Store or Google Play.
2. Create an account using your email or phone number.
3. Set up your profile and create a Circle for your family.
4. Invite your child to join the Circle by sharing the invite code.
5. Grant necessary permissions such as location access and notifications.

3. Key Features for Safety

a. Location Tracking

Track your child's real-time location and receive alerts when they arrive or leave designated places like school or home.

b. Driving Reports

Monitor driving behavior including speed, phone usage while driving, and hard braking to ensure safe travel.

c. SOS Alerts

Your child can send an SOS alert with their location to all Circle members in case of emergency.

4. Tips for Using Life360 Effectively in the UK

- Discuss the app openly with your child to build trust and understanding.
- Use location alerts to monitor school commutes and social outings.
- Set up geofences around key locations for automatic notifications.
- Review driving reports together to encourage safe habits.
- Use the app's privacy settings to manage what information is shared.

Parent Guide to Mobile Safety in the UK

Introduction

Mobile phones are a big part of children's lives. While they offer many benefits, they also come with risks. This guide helps parents in the UK keep their children's mobile use safe and healthy.

General Mobile Safety Tips

- Talk regularly with your child about how they use their phone.
- Set clear rules about screen time and appropriate content.
- Keep devices in shared family spaces when possible.
- Encourage your child to come to you if something online makes them uncomfortable.

Recommended Parental Control Apps

Here are some trusted apps that help parents monitor and manage mobile use:

- Qustodio: Offers screen time limits, app blocking, and activity reports.
- Net Nanny: Provides web filtering, alerts, and location tracking.
- Norton Family: Helps monitor web use, search terms, and time spent online.

Social Media Safety

- Know which platforms your child uses (e.g., TikTok, Instagram, Snapchat).
- Set privacy settings to limit who can contact or view your child's profile.
- Teach your child not to share personal information or location publicly.
- Encourage respectful and kind behavior online.

Screen Time Management

- Use built-in tools like Apple Screen Time or Google Family Link.
- Set daily limits and schedule device-free times (e.g., during meals or bedtime).
- Model healthy screen habits as a parent.

UK-Specific Resources

- NSPCC: <https://www.nspcc.org.uk/keeping-children-safe/online-safety/>
- Internet Matters: <https://www.internetmatters.org/>
- Childnet: <https://www.childnet.com/>
- UK Safer Internet Centre: <https://saferinternet.org.uk/>

Comparison of Parental Control Apps

This table compares popular parental control apps that help monitor and manage children's phone usage. It includes key features, supported platforms, and pricing information where available.

App Name	Key Features	Platforms Supported	Pricing (if available)
Qustodio	Screen time tracking, app usage, web filtering, location tracking, panic button	iOS, Android, Windows, Mac	Free basic plan; Premium starts at ~£39.95/year
Net Nanny	Internet filter, app blocking, screen time management, location tracking	iOS, Android, Kindle, Windows	Starts at ~£39.99/year
Norton Family	Web activity monitoring, search tracking, location tracking, time limits	Windows, Android, iOS	Included with Norton 360 Premium (~£79.99/year)
Google Family Link	App management, screen time limits, location tracking, approve downloads	Android, iOS	Free
Life360	Real-time location tracking, driving reports, SOS alerts, check-ins	iOS, Android	Free basic plan; Premium plans available
Bark	Monitors texts, emails, 30+ apps for risks, alerts to parents	iOS, Android, Chromebooks	Starts at ~£79/year
Apple Screen Time & Family Sharing	App limits, downtime, content restrictions, purchase approvals, location tracking	iOS only	Free (built-in)

Parent Guide to Apple Family Sharing and iPhone Safety

1. Setting Up Family Sharing

Apple Family Sharing allows you to share Apple subscriptions, purchases, and more with up to six family members. To set it up:

- Go to Settings > [your name] > Family Sharing.
- Tap 'Set Up Your Family' and follow the onscreen instructions.
- Invite family members using their Apple IDs.

2. Managing Screen Time

Screen Time helps you monitor and limit your child's device usage:

- Go to Settings > Screen Time.
- Tap 'Turn On Screen Time' and choose 'This is My Child's iPhone'.
- Set Downtime, App Limits, and Content & Privacy Restrictions.

3. Using Ask to Buy

Ask to Buy sends purchase requests to the family organizer:

- Go to Settings > [your name] > Family Sharing > [child's name] > Ask to Buy.
- Turn on Ask to Buy to approve or decline purchases remotely.

4. Sharing Locations

Location sharing helps you keep track of your child's whereabouts:

- Open Find My app.
- Tap 'Share My Location' and choose family members.
- Ensure Location Services are enabled in Settings > Privacy & Security > Location Services.

5. Setting Content Restrictions

You can restrict explicit content, web access, and app downloads:

- Go to Settings > Screen Time > Content & Privacy Restrictions.
- Enable restrictions and customize settings for content, web access, and app usage.

6. Tips for Keeping Children Safe on Apple Devices

- Regularly review your child's device usage and app activity.
- Use Family Sharing to manage purchases and subscriptions.

	Autumn 1 Clubs	Open to	Dates	Time	Price	Payable to	Location	How to get a place?	Places
Monday	Messy Church	Reception to Y6	15.09.25 & 13.10.25	3.15pm-4.30pm	£2 per session	School	Church	Book via ParentPay	Yes
	Ju-Jitsu	Reception to Y6	08.09.25 – 20.10.25	3.15pm-4.15pm	£36	Activ8	Hall	Email: info@activ8selfdefence.com.	Yes
Tuesday	Acrobatic and tumbling club	Y3-Y6	16.09.25-21.10.25	3.15pm-4.15pm	£6 per session	Collaboration dance	Hall	Email: collaborationdancearts@gmail.com	Yes
Wednesday	Art & Craft Club	Reception to Y6	17.09.25 – 22.10.25	3.15pm-4.15pm	£30	School	Y3	Book via ParentPay	Yes
	KS1 multi skills	R-Y2	17.09.25 – 22.10.25	3.15pm-4.15pm	£30	School	Playground	Book via ParentPay	Yes
Thursday	Golfstarz	Y1-Y6	18.09.25 – 23.10.25	3.15pm-4.15pm	£30	Golfstarz	Playground	Email blackpoolgolfstarz@gmail.com	Yes
Friday	Cook Stars	Reception to Y6	19.09.25 – 17.10.25	3.15pm-4.30pm	£57.50	Cook stars	Hall	https://portal.cookstars.franscape.io/class-overview/2420	Yes
	KS2 Football	Y3-Y6	19.09.25 – 17.10.25	3.15pm-4.15pm	£30	School	Field	Book via ParentPay	Yes

“Let us love, not in word, but in truth and action.” 1 John 3:18